

## **Rope Rescue Operations – High Angle (20 hours)**

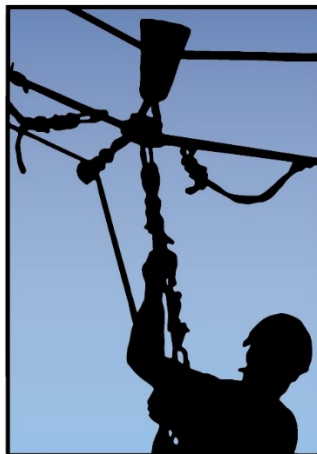
Pre-Requisites: Age 18 and up, Rope Rescue Operations – Low Angle (16 hrs), or equivalent

PA DOH EMS Con-Ed: 4.5 hours (0.5 clinical)

Maximum Students: 6

This class expands upon the Rope Rescue Operations – Low Angle course and teaches more advanced operations level rope rescue skills. Students will learn multipoint anchor systems, compound mechanical advantage, additional belay techniques, and practice rescue techniques in a vertical environment. Students will also learn individual rescue skills such as rappelling, ascending, and self-rescue from situations such as a jammed descent control device. This course is designed for a small group to maximize hands-on training time and to develop strong communications and team work skills amongst the students.

**ELDER TECHNICAL  
RESCUE SERVICES LLC**



[www.ElderTechnicalRescue.com](http://www.ElderTechnicalRescue.com)